

GENERAL NOTES

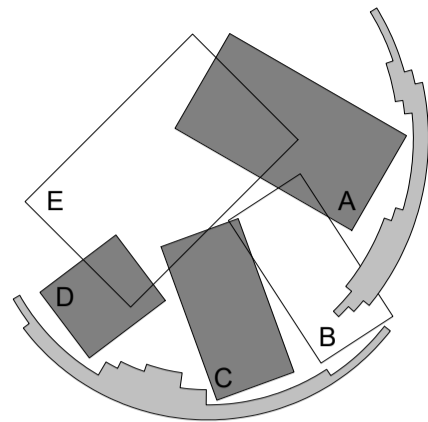
DO NOT SCALE FROM THIS DRAWING

CONFIRM ALL DIMENSIONS AND SETOUTS ON SITE PRIOR TO MANUFACTURE & INSTALLATION

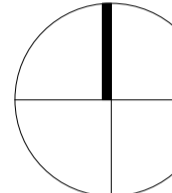
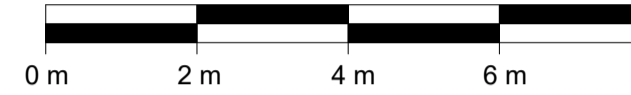
ALL WORK IN ACCORDANCE WITH RELEVANT AUSTRALIAN STANDARDS

TO BE READ IN CONJUNCTION WITH ENGINEERS DOCUMENTS.

KEY PLAN



LEGEND



00-06_MATERIAL LEGEND

CODE	DESCRIPTION
------	-------------

CB-01	Concrete Block
CF-01	Concrete Floor
CPT-01	Carpet Tile
CS-01	Canopy Shading
EF-01	External Façade
GW-01	Gabion Wall
RF-01	Metal Sheetting
RF-02	Polycarbonate Sheetting
SG-01	Steel Grating
TC-01	Timber Columns (Recycled)
TF-01	Timber Flooring (Recycled)

01	07/06/23	Development Application
Rev	Date	Description

Sydney Level 2, 79 Myrtle St
Chippendale 2008
Nominated Architect: Gerard Reinmuth 6629
T 02 9698 2198
F 02 9698 2353

Hobart 181 Elizabeth St
Hobart 7000
Nom. Architect TAS: Scott Balmforth CC1041T
Registered Architect VIC: Scott Balmforth 16263
T 03 6234 6372
F 03 6231 4939

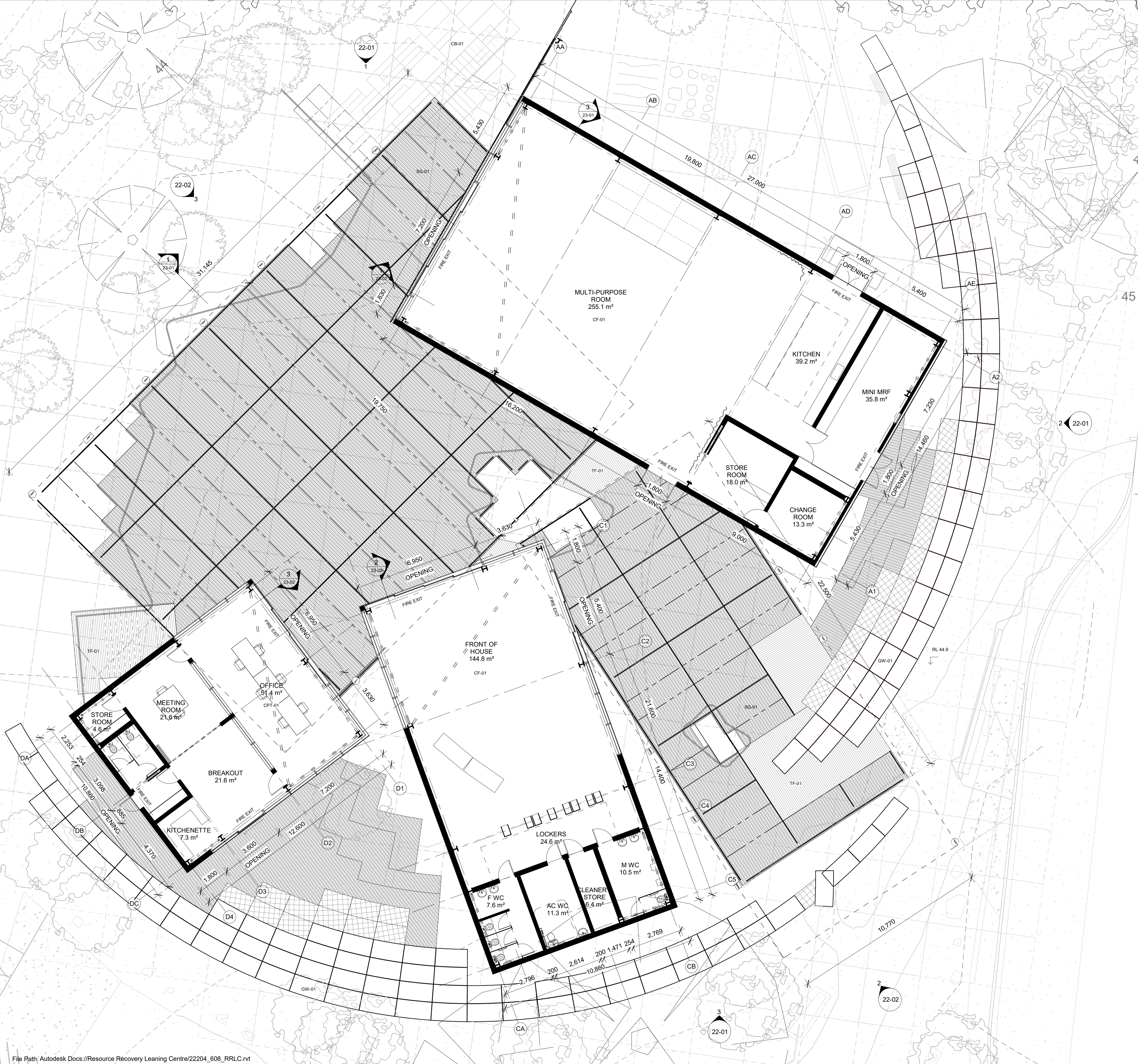
TERROIR

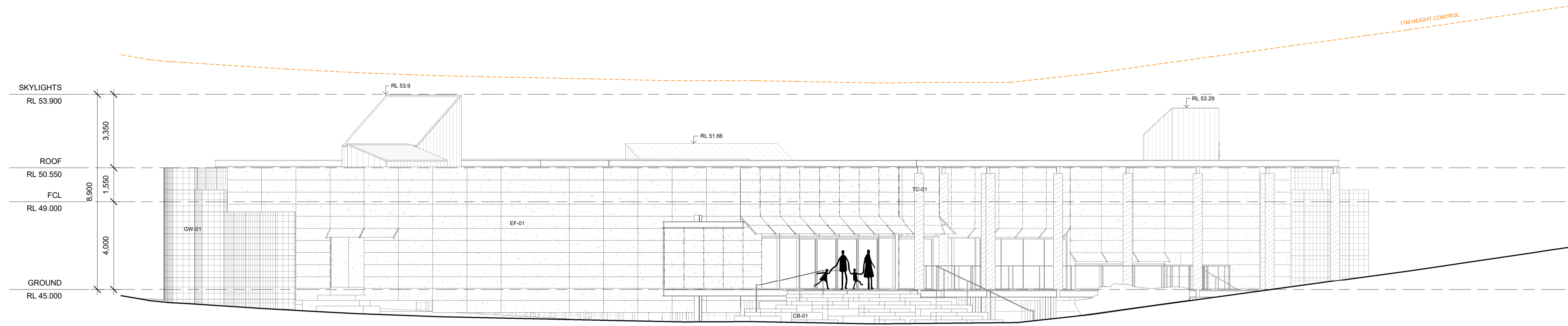
Project:
Shoalhaven City Council
Resource Recovery Learning Centre
120 Flatrock Road, Mundamia NSW
Drawing Description:
GROUND FLOOR PLAN

Drawn by: AN Checked by: JL Scale: 1:100 @ A1

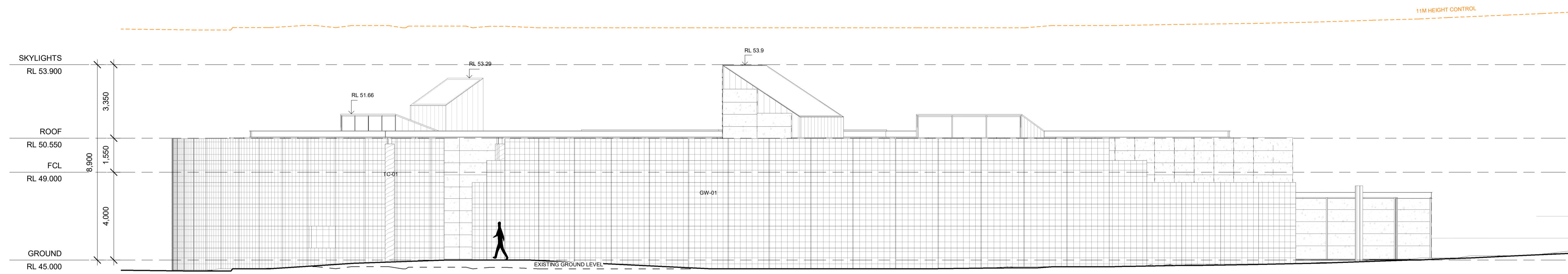
PROJECT NO:	DWG NO:	REV NO:
22204	DA-21-01	01

Drawing Status: DEVELOPMENT APPLICATION

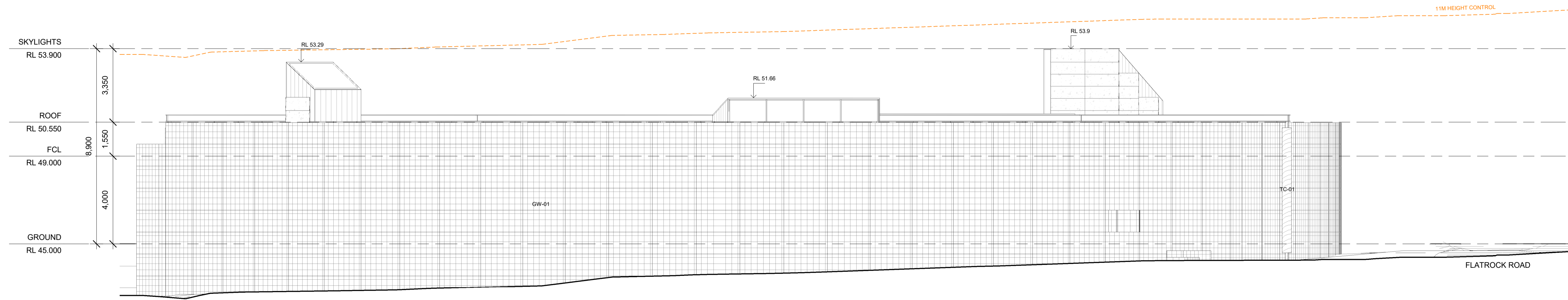




1 North Elevation
21-01 1:100



2 East Elevation
21-01 1:100



3 South Elevation
21-01 1:100

GENERAL NOTES
DO NOT SCALE FROM THIS DRAWING
CONFIRM ALL DIMENSIONS AND SETOUTS ON SITE PRIOR TO MANUFACTURE & INSTALLATION
ALL WORK IN ACCORDANCE WITH RELEVANT AUSTRALIAN STANDARDS
TO BE READ IN CONJUNCTION WITH ENGINEERS DOCUMENTS.

KEY PLAN

LEGEND

0 m 2 m 4 m 6 m 8 m

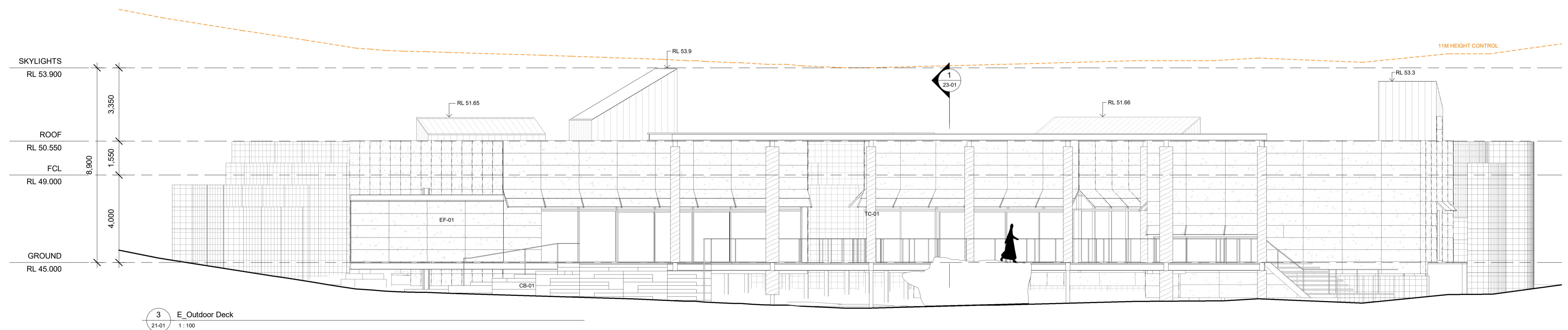
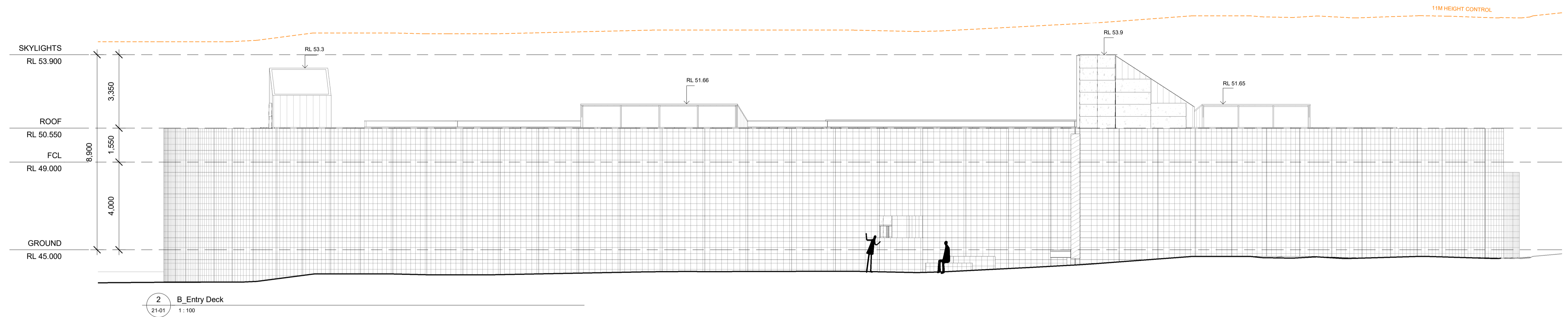
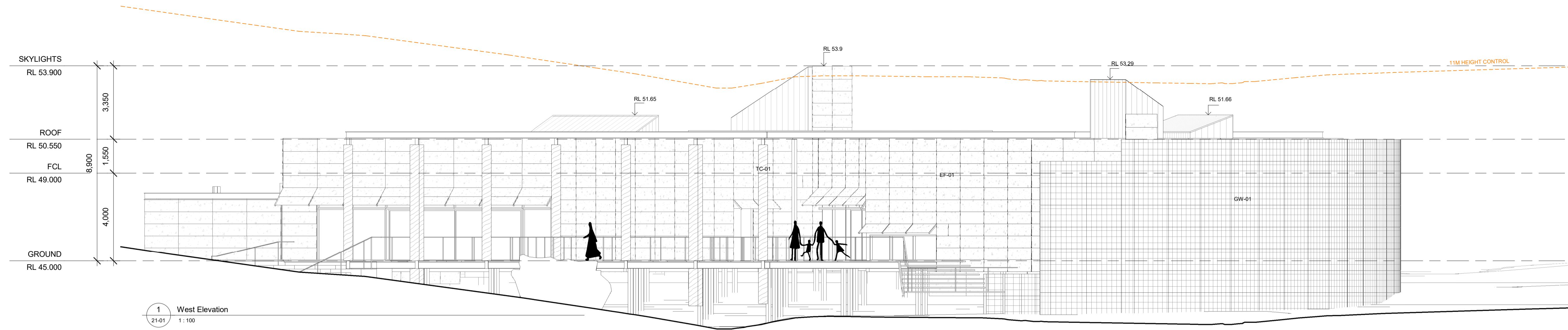
00-06_MATERIAL LEGEND	
CODE	DESCRIPTION
CB-01	Concrete Block
CF-01	Concrete Floor
CPT-01	Carpet Tile
CS-01	Canopy Shading
EF-01	External Façade
GW-01	Gabion Wall
RF-01	Metal Sheetting
RF-02	Polycarbonate Sheetting
SG-01	Steel Grating
TC-01	Timber Columns (Recycled)
TF-01	Timber Flooring (Recycled)

01	07/06/23	Development Application
Rev	Date	Description
Sydney Level 2, 79 Myrtle St Chippendale 2008 Nominated Architect: Gerard Reinmuth 6629 T 02 9698 2198 F 02 9698 2353		
Hobart 181 Elizabeth St Hobart 7000 Nom. Architect TAS: Scott Balmforth CC1041T Registered Architect VIC: Scott Balmforth 16263 T 03 6234 6372 F 03 6231 4939		

TERROIR

Project:
Shoalhaven City Council
Resource Recovery Learning Centre
120 Flatrock Road, Mundamia NSW

Drawing Description:
BUILDING ELEVATIONS



GENERAL NOTES

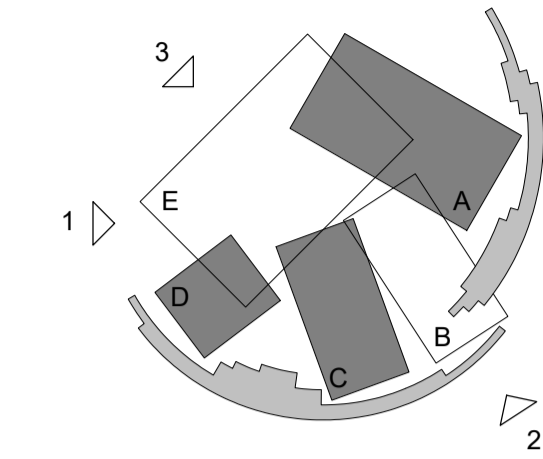
DO NOT SCALE FROM THIS DRAWING

CONFIRM ALL DIMENSIONS AND SETOUTS ON SITE PRIOR TO MANUFACTURE & INSTALLATION

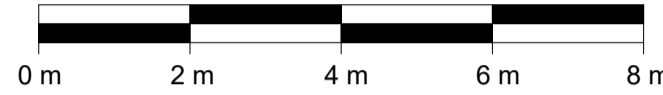
ALL WORK IN ACCORDANCE WITH RELEVANT AUSTRALIAN STANDARDS

TO BE READ IN CONJUNCTION WITH ENGINEERS DOCUMENTS.

KEY PLAN



LEGEND



00-06_MATERIAL LEGEND	
CODE	DESCRIPTION
CB-01	Concrete Block
CF-01	Concrete Floor
CPT-01	Carpet Tile
CS-01	Canopy Shading
EF-01	External Façade
GW-01	Gabion Wall
RF-01	Metal Sheetting
RF-02	Polycarbonate Sheetting
SG-01	Steel Grating
TC-01	Timber Columns (Recycled)
TF-01	Timber Flooring (Recycled)

01	07/06/23	Development Application
Rev	Date	Description

Sydney Level 2, 79 Myrtle St
Chippendale 2008
Nominated Architect: Gerard Reinmuth 6629
T 02 9698 2198
F 02 9698 2353

Hobart 181 Elizabeth St
Hobart 7000
Nom. Architect TAS: Scott Balmforth CC1041T
Registered Architect VIC: Scott Balmforth 16263
T 03 6234 6372
F 03 6231 4939

TERROIR

Project:
Shoalhaven City Council
Resource Recovery Learning Centre
120 Flatrock Road, Mundamia NSW
Drawing Description:
BUILDING ELEVATIONS

Drawn by: AN Checked by: JL Scale: 1:100 @ A1

PROJECT NO:	DWG NO:	REV NO:
22204	DA-22-02	01

Drawing Status: DEVELOPMENT APPLICATION

GENERAL NOTES

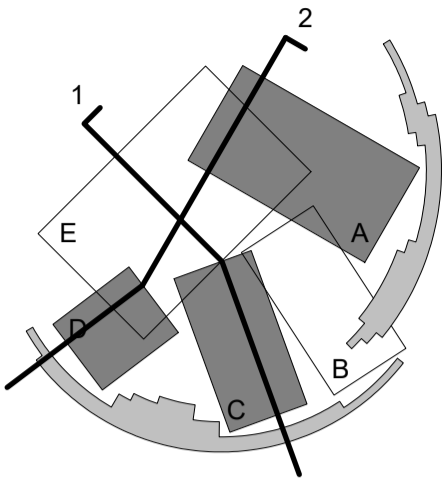
DO NOT SCALE FROM THIS DRAWING

CONFIRM ALL DIMENSIONS AND SETOUTS ON SITE PRIOR TO MANUFACTURE & INSTALLATION

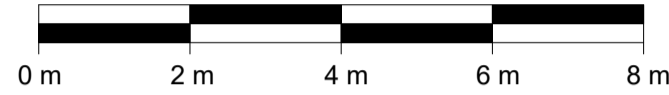
ALL WORK IN ACCORDANCE WITH RELEVANT AUSTRALIAN STANDARDS

TO BE READ IN CONJUNCTION WITH ENGINEERS DOCUMENTS.

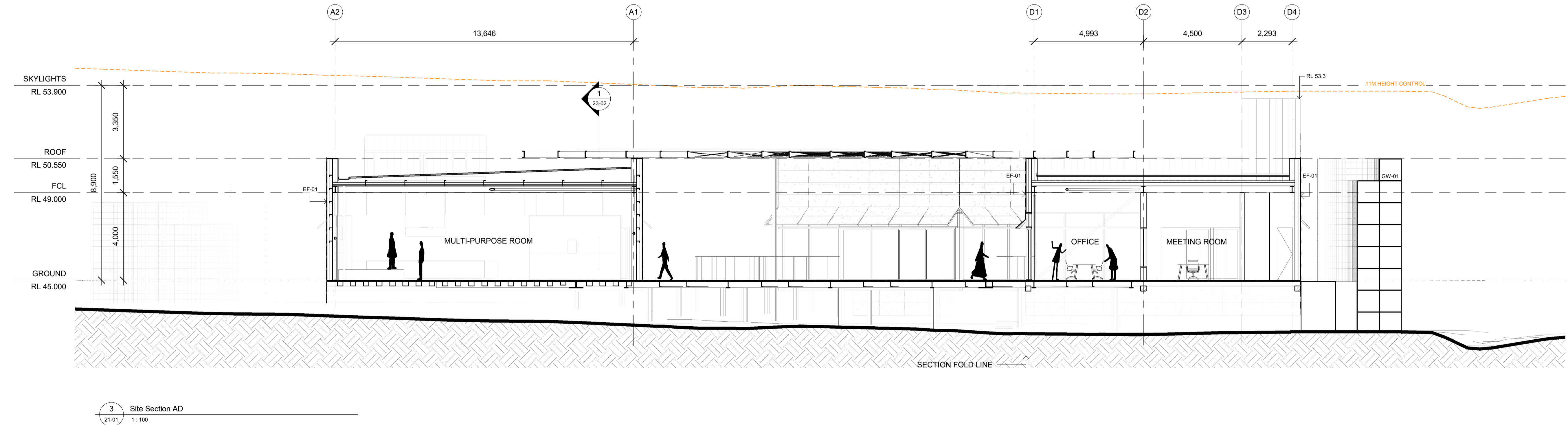
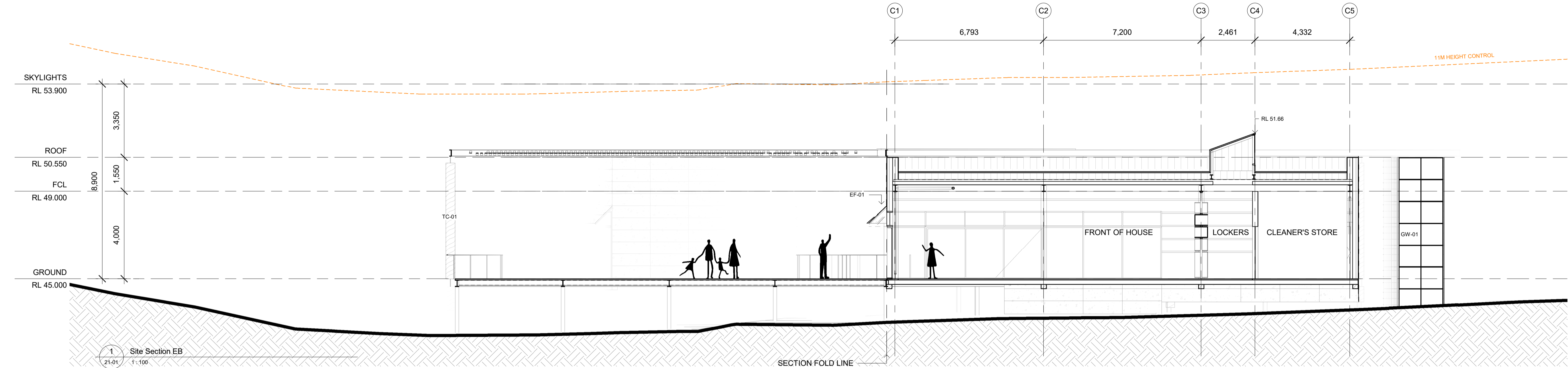
KEY PLAN



LEGEND



00-06_MATERIAL LEGEND	
CODE	DESCRIPTION
CB-01	Concrete Block
CF-01	Concrete Floor
CPT-01	Carpet Tile
CS-01	Canopy Shading
EF-01	External Façade
GW-01	Gabion Wall
RF-01	Metal Sheetting
RF-02	Polycarbonate Sheetting
SG-01	Steel Grating
TC-01	Timber Columns (Recycled)
TF-01	Timber Flooring (Recycled)



01	07/06/23	Development Application
Rev	Date	Description

Sydney Level 2, 79 Myrtle St
Chippendale 2008
Nominated Architect: Gerard Reinmuth 6629
T 02 9698 2198
F 02 9698 2353

Hobart 181 Elizabeth St
Hobart 7000
Nom. Architect TAS: Scott Balmforth CC1041T
Registered Architect VIC: Scott Balmforth 16263
T 03 6234 6372
F 03 6231 4939

TERROIR

Project:
Shoalhaven City Council
Resource Recovery Learning Centre
120 Flatrock Road, Mundamia NSW

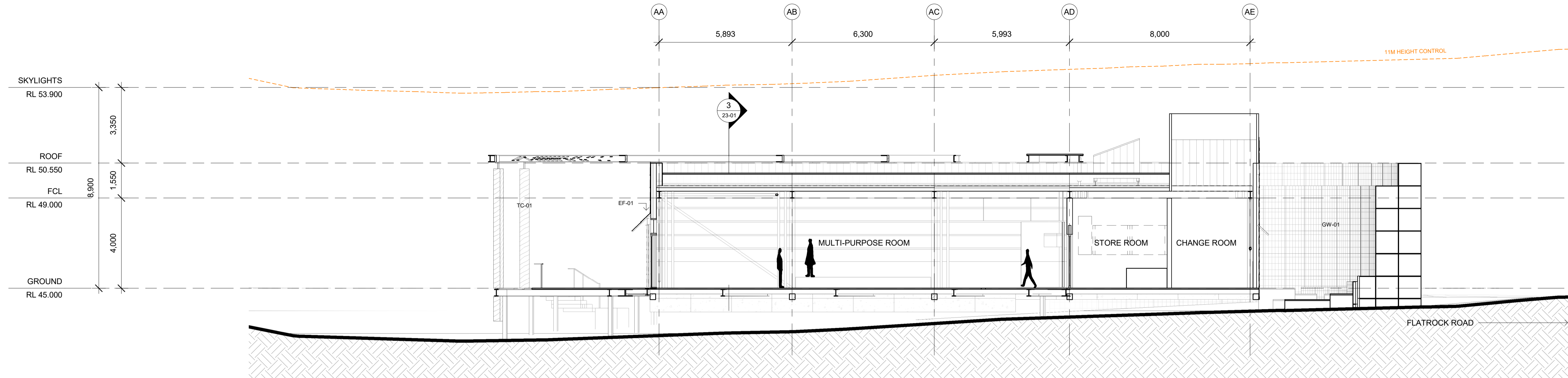
Drawing Description:

SITE SECTIONS

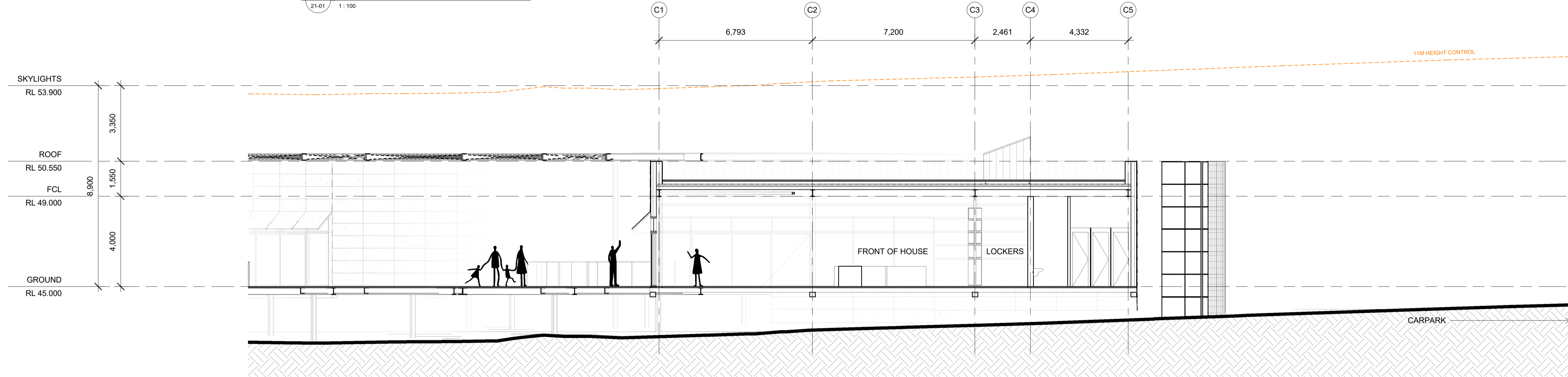
Drawn by: AN Checked by: JL Scale: 1:100 @ A1

PROJECT NO:	DWG NO:	REV NO:
22204	DA-23-01	01

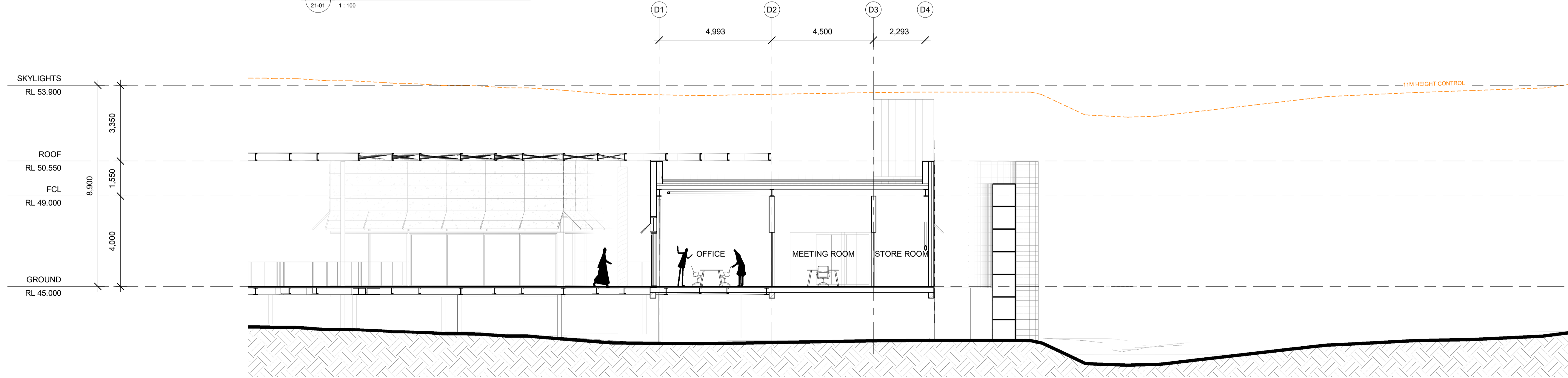
Drawing Status: DEVELOPMENT APPLICATION



1 A Multi-Use - Long
21-01 1:100



2 C Front of House - Long
21-01 1:100



3 D Office - Long
21-01 1:100

GENERAL NOTES

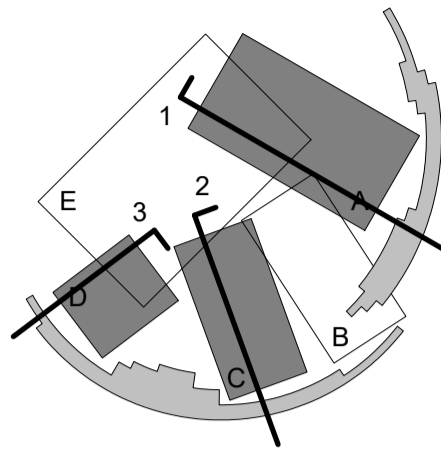
DO NOT SCALE FROM THIS DRAWING

CONFIRM ALL DIMENSIONS AND SETOUTS ON SITE PRIOR TO MANUFACTURE & INSTALLATION

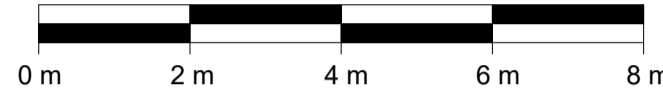
ALL WORK IN ACCORDANCE WITH RELEVANT AUSTRALIAN STANDARDS

TO BE READ IN CONJUNCTION WITH ENGINEERS DOCUMENTS.

KEY PLAN



LEGEND



00-06_MATERIAL LEGEND	
CODE	DESCRIPTION
CB-01	Concrete Block
CF-01	Concrete Floor
CPT-01	Carpet Tile
CS-01	Canopy Shading
EF-01	External Façade
GW-01	Gabion Wall
RF-01	Metal Sheeting
RF-02	Polycarbonate Sheeting
SG-01	Steel Grating
TC-01	Timber Columns (Recycled)
TF-01	Timber Flooring (Recycled)

01	07/06/23	Development Application
Rev	Date	Description

Sydney Level 2, 79 Myrtle St
Chippendale 2008
Nominated Architect: Gerard Reinmuth 6629
T 02 9698 2198
F 02 9698 2353

Hobart 181 Elizabeth St
Hobart 7000
Nom. Architect TAS: Scott Balmforth CC1041T
Registered Architect VIC: Scott Balmforth 16263
T 03 6234 6372
F 03 6231 4939

TERROIR

Project:
Shoalhaven City Council
Resource Recovery Learning Centre
120 Flatrock Road, Mundamia NSW

Drawing Description:
BUILDING SECTIONS

Drawn by: AN Checked by: JL Scale: 1:100 @ A1

PROJECT NO:	DWG NO:	REV NO:
22204	DA-23-02	01

Drawing Status: DEVELOPMENT APPLICATION